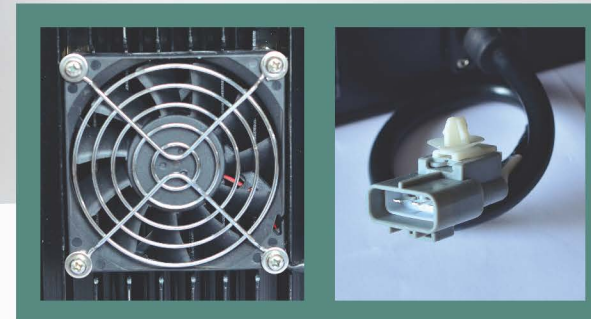






# ESCH12 series Charger



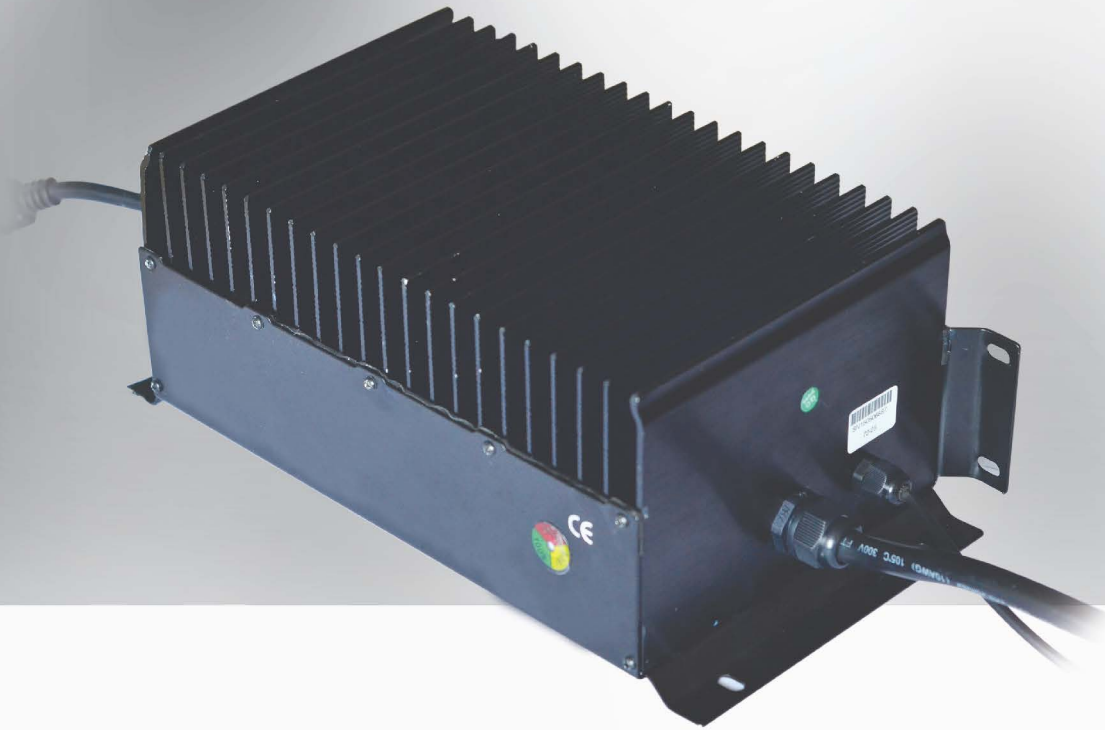
## Product overview and application scope :

- Input voltage range is very wide, AC185V-AC264V
- The efficiency is very high, can reach more than 95%, the traditional charger can only reach about 80%.
- The intelligent temperature compensation function of the charging process can avoid the damage caused by the over charge or under charge of the battery, and the service life of the battery can be prolonged.
- Do the internal charger seismic processing, seismic grade up to SAEJ1378, fully meet the electric vehicle-using standard.
- Use the LLC resonance technology, whole charging process working under soft switching condition, with the less heating of the whole machine.

## Product features :

- Single Chip Microcomputer (SCM) according to the lead-acid batteries tolerance current capacity, life curve, gas analysis point and other information to complete the full charge of the whole process;
- With the environmental temperature compensation function, to ensure that the temperature of the weather conditions, can automatically resist over-charge and under-charge;
- With pulse charging function, to ensure the best life of the battery under the premise of its full;
- After three paint processing and dustproof design, improve the reliability of the operation;
- This series of products with digital display function, can display online charging current, voltage, charging time;

Model	ESCH4825	ESCH6020	ESCH7216
Dimensions	Long * wide * high 282*167*114(mm)		
Maximum output current (A)	25	20	16
Maximum power point (W)	≤2200W		
Input voltage (VAC)	185V~264V		
Output voltage (VDC)	65V	89.8V	103.8V
Applicable battery voltage	48V lead acid battery	60V lead acid battery	72V lead acid battery
Maximum efficiency	95%		
Output voltage regulation precision	±1%		
Output current accuracy	±1%		
Working temperature	-30℃~45℃		
Classes of seismic measure	SAEJ1378		
Cooling mode	Self cooling		
Over temperature protection	75℃±5		
Input under-voltage protection (VAC)	Under-voltage point 185V		
Output over-voltage protection (VDC)	66V±1	91V±1	105V±1
Output over-current protection (A)	>110%*Maximum charge current		
Output short circuit protection	When the output is short circuited, charger shutdown, and automatic recovery after short-circuit solved.		
Battery reverse protection	Charger shutdown and alarm when the wire is connected reversely, it will automatically resume after wiring correctly.		



# ESCH13 series Charger



## Product overview and application scope :

- Input voltage range is very wide, AC100V-AC264V
- The efficiency is very high, can reach more than 95%, the traditional charger can only reach about 80%.
- The intelligent temperature compensation function of the charging process can avoid the damage caused by the over charge or under charge of the battery, and the service life of the battery can be prolonged.
- Do the internal charger seismic processing, seismic grade up to SAEJ1378, fully meet the electric vehicle-using standard.
- Use the LLC resonance technology, whole charging process working under soft switching condition, with the less heating of the whole machine.

## Product features :

- Single Chip Microcomputer (SCM) according to the lead-acid batteries tolerance current capacity, life curve, gas analysis point and other information to complete the full charge of the whole process.
- With the environmental temperature compensation function, to ensure that the temperature of the weather conditions, can automatically resist over-charge and under-charge.
- With pulse charging function, to ensure the best life of the battery under the premise of its full.
- After three paint processing and dustproof design, improve the reliability of the operation.
- This series of products with digital display function, can display online charging current, voltage, charging time.

Model	ESCH4850	ESCH6040	ESCH7235
Dimensions	Long * wide * high 348*198*138(mm)		
Maximum output current (A)	50	40	35
Maximum power point (W)	≤3300W		
Input voltage (VAC)	185V~264V		
Output voltage (VDC)	65V	89.8V	103.8V
Applicable battery voltage	48V lead acid battery	60V lead acid battery	72V lead acid battery
Maximum efficiency	95%		
Output voltage regulation precision	±1%		
Output current accuracy	±1%		
Working temperature	-30℃~45℃		
Classes of seismic measure	SAEJ1378		
Cooling mode	Self cooling		
Over temperature protection	75℃±5		
Input under-voltage protection (VAC)	Under-voltage point 185V		
Output over-voltage protection (VDC)	66V±1	91V±1	105V±1
Output over-current protection (A)	>110%*Maximum charge current		
Output short circuit protection	When the output is short circuited, charger shutdown, and automatic recovery after short-circuit solved.		
Battery reverse protection	Charger shutdown and alarm when the wire is connected reversely, it will automatically resume after wiring correctly.		

# LET'S GROW TOGETHER



**Zhe jiang Young Energy Technology Co.,Ltd.**

Add:The Science and Technology Park No.1 building,Yanguang  
Industrial Zone No.1 area,Anji,Zhejiang,China.  
[www.YoungEnergy.com](http://www.YoungEnergy.com)

**Sales Headquarters**

Tel:86-572-5862668  
Fax:86-572-5862667  
[Yao@youngenergy.com](mailto:Yao@youngenergy.com)  
[Sales@youngenergy.com](mailto:Sales@youngenergy.com)

**Service Center**

Tel:86-572-5856000  
Fax:86-572-5862667  
[Yao@youngenergy.com](mailto:Yao@youngenergy.com)  
[Service@youngenergy.com](mailto:Service@youngenergy.com)